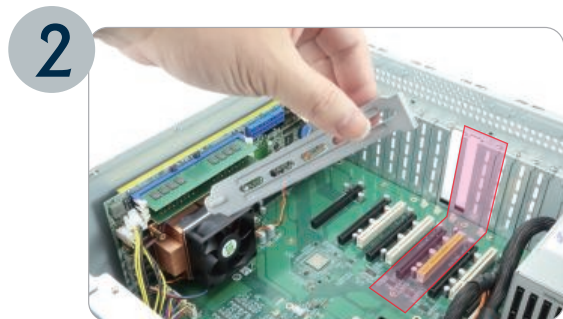


Hardware Installation 硬體安裝

- Compliant with PCI-Express Specification V2.0
- PCI-Express x4 Interface is Compatible with PCI-Express x4, x8, and x16 slots



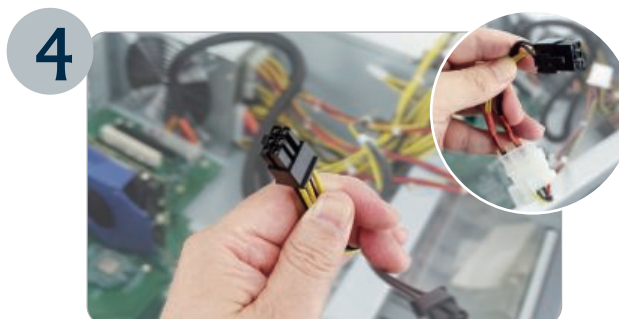
1 Disconnect the computer from the power supply before installation. IEI RACK-4200 chassis with SPCIE-C236 is used in this instruction.
安裝前，確認系統電源關閉，本次安裝教學採用 IEI RACK-4200機箱+SPCIE-C236



2 Two side-by-side PCIe slots are needed for installation. Remove the two blank brackets aligning with the PCIe slot (right side) that will be installed with the Mustang-200.
一片Mustang-200 需預留兩個插槽孔位，兩個預備插槽中，右邊為預備安裝Mustang-200的PCI-E插槽，並移除對應機箱擋片



3 Press down to seat the Mustang-200 correctly in the slot. Install the bracket screw to secure the Mustang-200.
將Mustang-200完全插入機板PCI-E插槽後，鎖上擋板螺絲固定



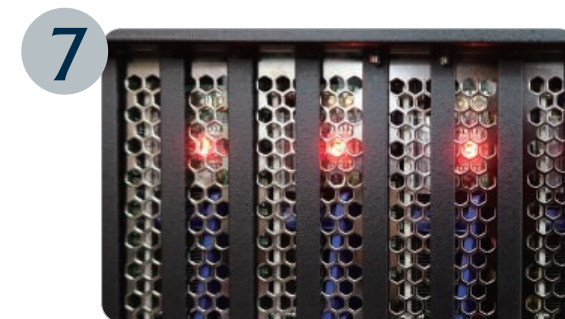
4 Use a power cable with 6-pin connector from the system, or add the 4-pin to 6-pin PCIe power adapter.
由機箱電源線拉出或使用隨附轉接線，轉接出6Pin顯示卡電源線



5 Connect the power cable to the power connector of the Mustang-200.
將電源線確實插入Mustang-200右上角電源接孔



6 Assign a card ID number between 1 and 6 to the Mustang-200 by adjusting the rotary switch.
設定 CARD ID，在1到6號中選擇想設定的號碼



7 The card ID number assigned in the previous step will be shown on the LED display of the card after power-up.
前步驟所設定的 CARD ID號碼，啟動電源後將顯示於板卡LED



8 Repeat the steps described above to install multiple Mustang-200 into the system if available.
如有多張Mustang-200可重複以上步驟安裝

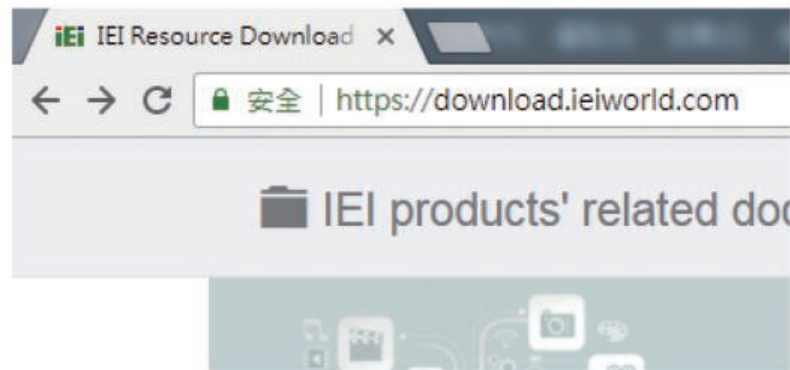


9 IEI RACK-4200 chassis can support up to six Mustang-200.
IEI RACK-4200機箱可支援多達六張Mustang-200

Software Installation 軟體安裝

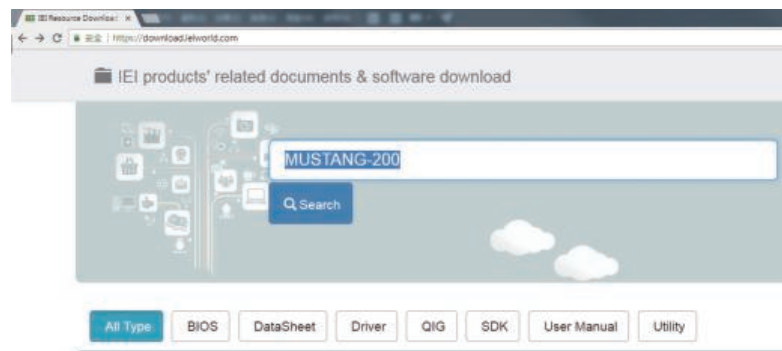
1

Go to IEI Resource Download page (<https://download.ieiworld.com>).
請開啟瀏覽器,輸入 download.ieiworld.com



2

Search for "Mustang-200" in the Download page.
於下載網頁內輸入Mustang-200



3

Download the latest program to install.
下載最新版本程式安裝使用

